



## Welcome to Stoneacre Lodge

At Stoneacre Lodge you will find care, comfort and peace of mind. The Home principally delivers long term residential and dementia care. Respite and day care are also provided and there is a dedicated respite room available to enable you to book dates in advance. The Home is set in the leafy village of Dunsville in Doncaster, supported by major routes and is easily reached. Our whole focus is to make your stay, whether short or long, a restful and caring experience where your wishes are met.

### WHY CHOOSE US ?

We understand that choosing the right care for yourself, your loved one or someone that you are looking out for can be difficult. For many of our residents living with us has resulted in the opportunity to really live life in a new and fulfilling way.



*My mum lived at here for nine years and received excellent care. The staff love and care for the residents beyond just a job. We can not thank them enough.*

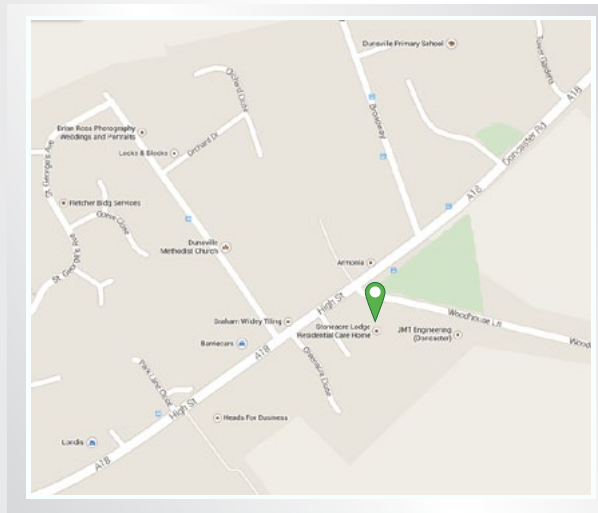
Lynn B



STONEACRE LODGE  
RESIDENTIAL HOME

### Contact Us

Highstreet, Dunsville,  
Doncaster, South Yorkshire,  
DN7 4BS



For further information about our homes  
please call or email us

Tel : 01302 882148

Mobile : 07932 625061

Email : [enquiries@stoneacrelodge.com](mailto:enquiries@stoneacrelodge.com)

You can also visit our website

[www.stoneacrelodge.com](http://www.stoneacrelodge.com)



STONEACRE LODGE  
RESIDENTIAL HOME



Doncaster's leading Residential  
& Dementia Care Home

01302 882148

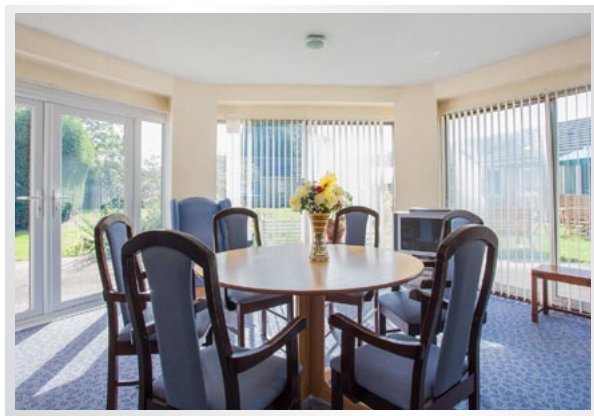
[enquiries@stoneacrelodge.com](mailto:enquiries@stoneacrelodge.com)

[WWW.STONEACRELODGE.COM](http://WWW.STONEACRELODGE.COM)

## Aims and Objectives



Stoneacre Lodge aims to provide a homely atmosphere where you are able to retain your independence, identity and sense of value in amongst a physical environment that supports your choices, your social life and your ability to communicate freely.



Stoneacre Lodge also looks to provide stimulation and emotional support so that you are able to build new links with the local community and maintain relationships with your friends and family with confidence and safety. Please be assured that your wellbeing is at the heart of everything we do.

## Facilities

Stoneacre Lodge is registered to provide care for 31 people. The care home offers 27 single rooms and two double rooms, 15 of which have en-suite facilities. All bedrooms have washbasins and commodes if required and each bedroom is equipped with a nurse call alarm system.



## Cuisine



Stoneacre Lodge provides varied and nourishing meals for the residents. Breakfasts are served according to individual needs and at times preferred by residents. Lunch is served approximately 12.30p.m. and tea at 4.30 p.m. All meals are served in the dining room but residents are welcome to have their meals in their room at any time day or night. Cultural needs and specific requirements are catered for.

## Our Care Team

**One of the main reasons behind the success of Stoneacre Lodge is the dedication and commitment shown by staff.**



The Home is currently run by a reputable and excellent manager who has served the Home for over 25 years. A majority of the staff have also spent a significant number of years at the Home and have great experience with settling in new residents rapidly and making them feel at ease. It must also be stated that the devotion to care by the staff is second to none.

## Activities

Activities for residents are arranged on a weekly basis by our activity coordinator. Activities include:

- ✿ Bingo
- ✿ Arts & Crafts
- ✿ Cards
- ✿ Afternoon Matinees
- ✿ Mobile Library
- ✿ Board Games
- ✿ Organised Outings
- ✿ Remembrance Sessions

